

**PURVALAND**

TN/11/Layout/0122/2023

**PURVALAND**

TN/11/Layout/0122/2023

**☎ 080 4455 5576**For more information visit : [www.rera.tn.gov.in](http://www.rera.tn.gov.in)**PURVA  
HIBISCUS**

P L O T T E D   D E V E L O P M E N T

S I N G A N A L L U R | C O I M B A T O R E

**PURVA HIBISCUS**

2247/48, Trichy Road, Singanallur, Coimbatore – 641005

This Brochure is purely conceptual and does not constitute a legal document. Visuals representation are not to be taken as facts and do not form a part of an offer or a contract. The photograph of the surrounding views and location have been digitally enhanced or altered and do not represent actual views or surrounding views. These photographs are indicative only. No photos have been shot on site. The management of Puravankara group reserve the right to add, delete, or alter any specifications metioned here.





## A LEGACY OF EXCELLENCE

Puravankara Limited is one of India's leading listed real estate companies headquartered in Bengaluru. 47 Years of building some of India's most recognised landmarks has helped us build homes loved by millions, across 9 cities in India.

Purvankara's signature includes its luxury themed projects inspired by the most beautiful places and experiences curated from around the world.

The Group's legacy is one of excellence delivered on time, ahead of time. Adopting advanced construction science and innovation technology long before it has become an industry trend

At Puravankara, all our endeavors revolve around just one entity - our customers. Their needs, dreams and aspirations are pivotal to our decisions. We call it "The You Philosophy".



47 years of  
brilliance



150+ awards of  
excellence



9 Indian cities on our  
map & more In line



43 million Sq. Ft.  
delivered successfully

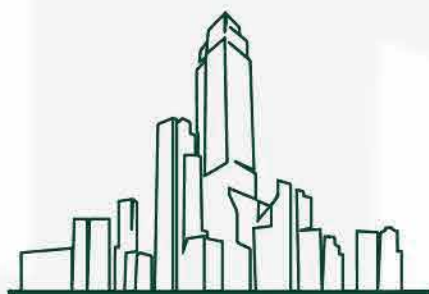


42,500+ homes  
delivered



Artistic Impression





## OUR ICONIC BRANDS

Ensuring excellence across the value chain



**PURAVANKARA** RESIDENTIAL  
Luxury Apartments | Villas

---



**PROVIDENT** RESIDENTIAL  
More For Sure  
Premium Development

---



**STARWORTH**  
INFRASTRUCTURE & CONSTRUCTION LTD.  
Engineering and Construction

---



**propmart**  
Real Estate Services

---



**PURAVANKARA** COMMERCIAL  
Tech/business Parks | Iconic Office Buildings  
| Facility Management

---



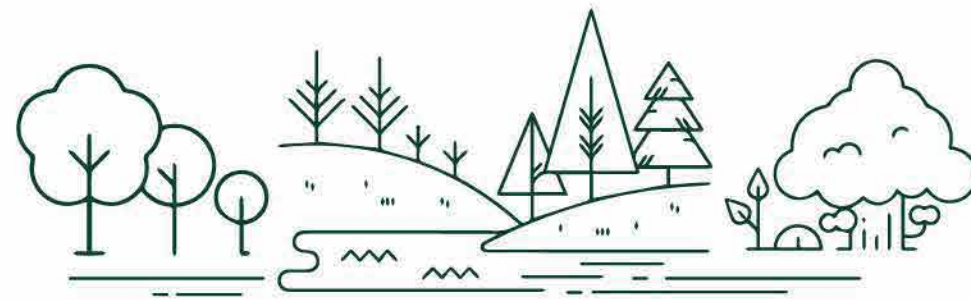
**PURVALAND** PLOTTED DEVELOPMENT  
Theme Based Unique Plotted Developments

---



**PURVA<sup>®</sup>STREAKS**  
Interior Design





## PLOTS THAT FORGE A BRIGHTER TOMORROW

Purva Land, a venture by Puravankara Group, presents a canvas for your dreams with unique plotted developments. Armed with decades of unrivalled expertise, the company aims to build communities that have immense economic potential. The various projects are designed as per your taste with world-class lifestyle amenities curated for you and your family.

A piece of land with Purva Land is an ever-appreciating asset and a priceless legacy to pass down through generations. Enjoy the benefits of a haven nestled amidst greenery and serenity.



Clear titles



Prime locations



Approved by relevant  
government authorities



Unparalleled  
Infrastructure

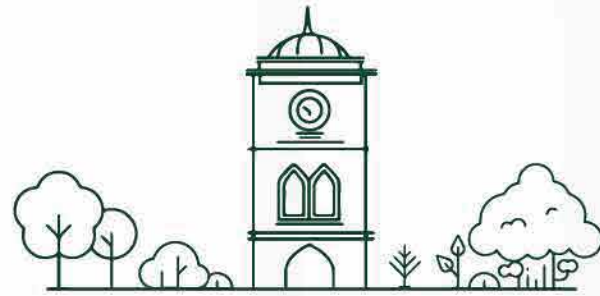


Benefits of a  
gated community



Image used for representation purpose.





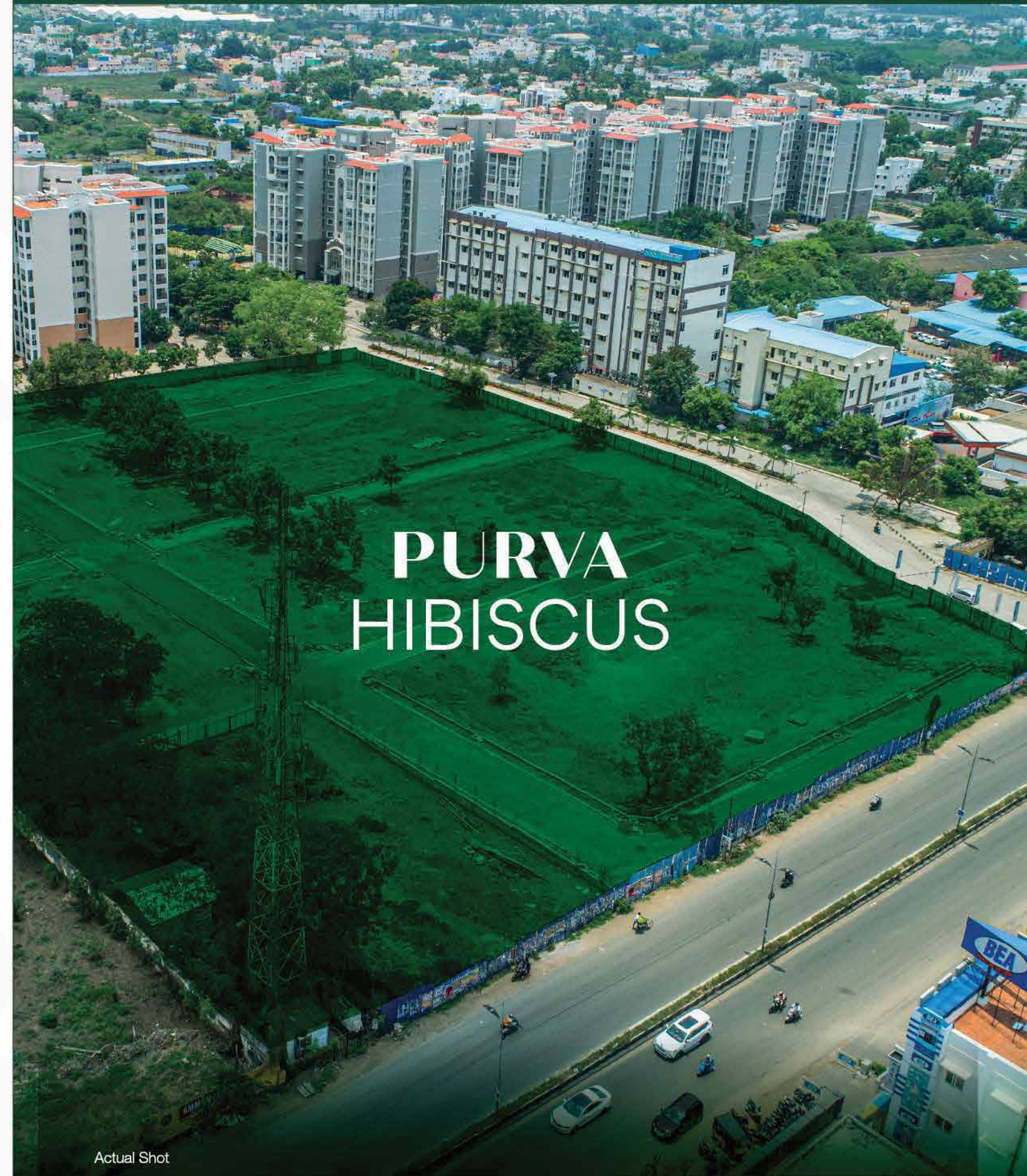
## THE HEART OF COIMBATORE

Often called the Manchester of South India, Coimbatore is a prominent industrial hub situated on the banks of the river Noyyal. Housing a large number of textile mills, manufacturing industries, and research institutes.

The city provides a balanced life by keeping nature first,  
with a flourishing locale alongside it.

And right at the heart of the city lies the evergreen locality of Singanallur. A paradise for nature lovers, the area is blessed with greenery all around.

With great proximity to railway stations, airports, major educational and healthcare institutions, efficient social infrastructure, and a booming tourism sector, Singanallur stands as the best location in Coimbatore to invest in.



Actual Shot





## GREAT CONNECTIVITY TO THE BEST PARTS OF THE CITY

### Schools

Park Primary & Nursery School  
The Bridgewoods Public School  
Bharath School  
Vibgyor High School

### Distance

1.9 Km  
2.8 Km  
2.9 km  
3 Km

### Colleges

Sri Jayendra Saraswathy Maha  
Vidyalaya College Of Arts & Science  
K.S.G. College Of Arts And Science  
Coimbatore Medical College  
Coimbatore Institute Of Technology

### Distance

1.6 Km  
3.3 Km  
6 Km  
6.4 Km

### Health Care

NG Hospital & Research Centre  
ESI Hospital  
Sumith Hospital  
SRM General Hospital  
Kovai Medical Center And Hospital

### Distance

1.6 Km  
2.9 Km  
5.1 Km  
10 Km  
12.6 Km

### IT Parks

Elcot Sez, Coimbatore  
Tidel Park Coimbatore Ltd  
Chil Sez It Park  
Indialand Tech Park, Coimbatore

### Distance

6.5 Km  
6.6 Km  
17.5 Km  
17.5 Km

### Other Attractions

Fun Republic Mall  
Coimbatore International Airport  
Brookefields Mall  
Prozone Mall

### Distance

5.3 km  
8 Km  
10.5 Km  
11.6 Km



## Legends

Office

Shopping

Airport

Healthcare

Highway

Schools

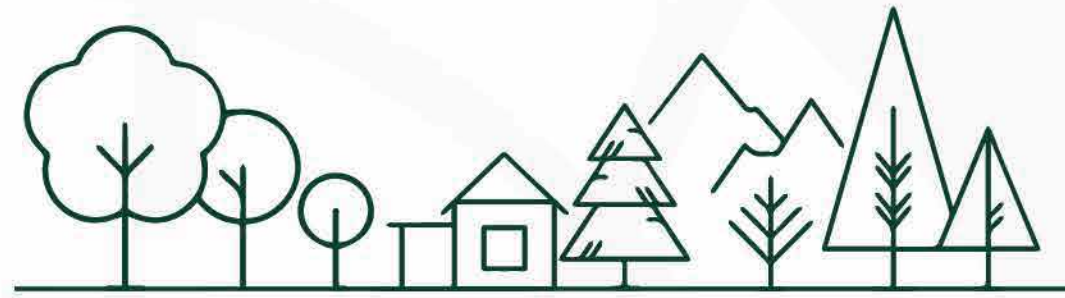
Railway Station

Park

Project

Map Not to Scale\*





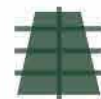
## WHERE NATURE BLOOMS IN FULL GLORY

Purva Land unfolds a well-balanced lifestyle burrowed amidst the enthralling beauty of nature with the unique plotted development – Hibiscus. Spread across 4.8 acres, the project is home to 68 exclusive plots and 5 commercial plots. Just as the name suggests, nature is at the core of every aspect of this project. With elegant outdoors and quintessential architecture, the development provides a sustainable lifestyle nestled in comfort.

Find a holistic ecosystem of unique facilities that let you live a life of peace and tranquility. Realise your dream of building your villa in a close-knit neighbourhood, replete with opulent amenities, while being heavily surrounded by lush green landscapes.



Premium plotted  
development



Large villa plots  
starting from 2000 Sq.Ft.



Located in a prime  
neighbourhood of  
Singanallur



Well connected to  
major parts of the city



Exclusive community  
with limited families



Lifestyle amenities  
for all age groups



Artistic Impression



## KEEP FIT WITH OUR DYNAMIC AMENITIES

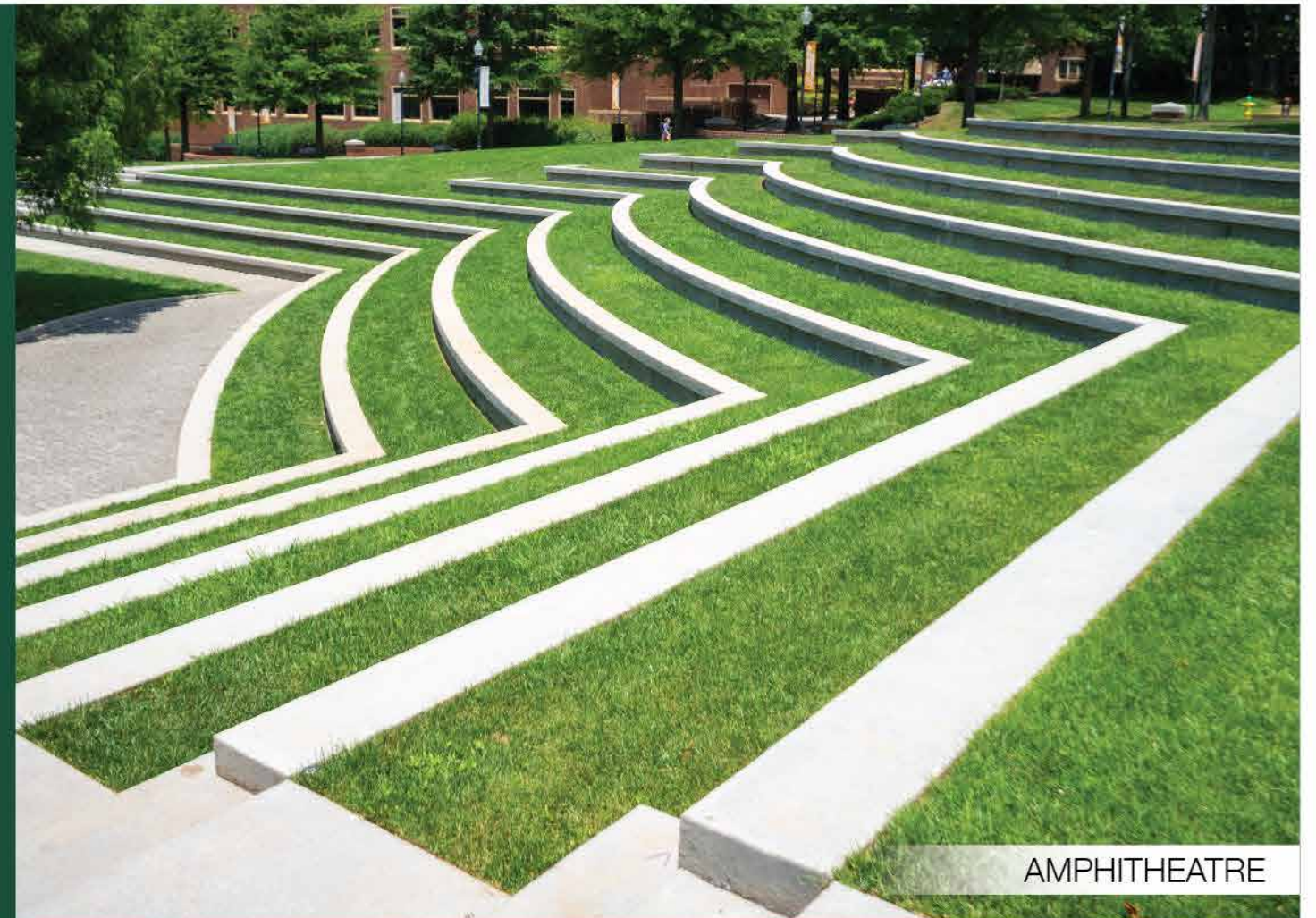


BASKETBALL HALF COURT



Images used for representation purpose.

KIDS PLAY AREA



AMPHITHEATRE

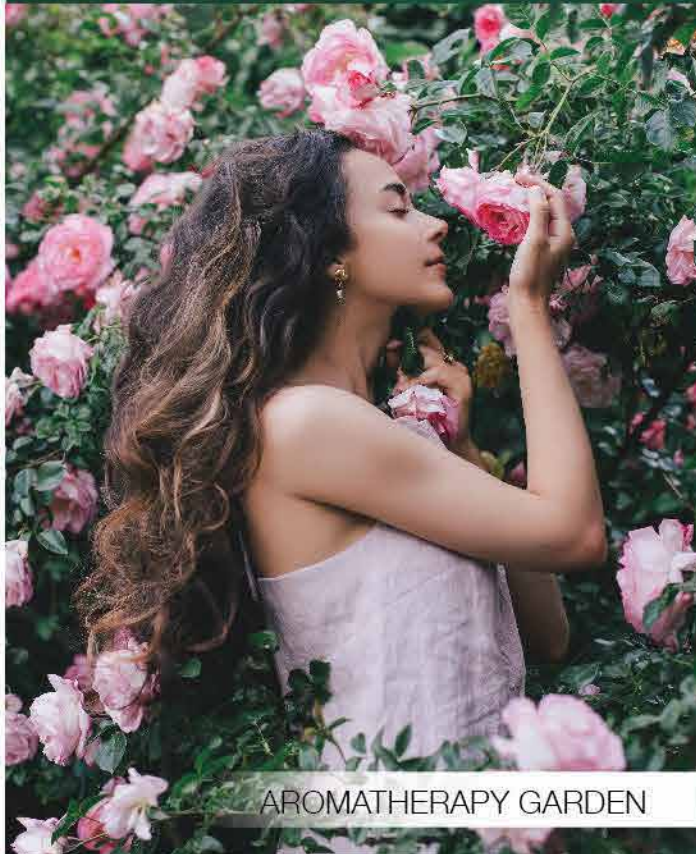


Images used for representation purpose.

PUTTING GREEN



## A GREEN NEIGHBOURHOOD FOR A HEALTHY LIFESTYLE



AROMATHERAPY GARDEN



BUTTERFLY GARDEN



REFLEXOLOGY PATH



HERB GARDEN

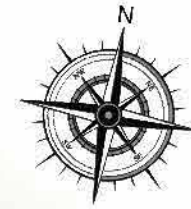


Artistic Impression

MIYAWAKI FOREST



# MASTER PLAN



## OUTDOOR AMENITIES

- A** Entry / Exit
- B** Kids Play Area
- C** Herb Garden
- D** Basketball Half Court
- E** Aroma Therapy Garden
- F** Amphitheatre Style Seating
- G** Lawn
- H** Butterfly Garden
- I** Putting Green
- J** Miyawaki Forest Planting
- K** Reflexology Path

## INDEX FOR PLOTS

	INDEX
	40' X 60'
	40' X 69'3"
	30' X 50'
	20' X 35'
	Corner Plot
	Premium Plot
	Garden Plot
	Commercial Plot
	Shop Plot
	Local Body
	Tangedco

WHERE LUXURY MEETS  
PEACE AND SERENITY

### Artistic Impression